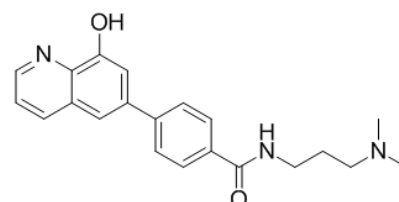


Product Name : ML324
Cat. No. : PC-43163
CAS No. : 1222800-79-4
Molecular Formula : C₂₁H₂₃N₃O₂
Molecular Weight : 349.4262
Target : Histone Demethylase
Solubility : DMSO: ≥ 33 mg/mL



Biological Activity

ML324 is a potent, selective **JMJD2 demethylase (KDM4)** inhibitor with IC₅₀ of 920 nM for JMJD2E, shows no activity against LSD1 (>100-fold selectivity), also inhibits the RNA binding activity of **PABPC1** with IC₅₀ of 0.816 μM. ML324 causes depression-like phenotype even in absence of stress exposure, which is associated with an increase in transcriptionally repressive epigenetic marks H3K9me2/me3 in nucleus accumbens (NAc). ML324 blocks TNF-α-mediated neutrophil adhesion, reduces TNF-α-induced ICAM1 protein expression in cerebral microvessels.

References

Rai G, et al. Probe Reports from the NIH Molecular Libraries Program [Internet].
 Pathak SS, et al. *Neuropsychopharmacology*. 2017 Mar;42(4):854-863.
 Choi JY, et al. *Sci Rep*. 2017 Mar 22;7:45005.
 Ishiguro K, et al. *Clin Immunol*. 2017 Jul;180:120-127.

Caution: Product has not been fully validated for medical applications. Lab Use Only!

E-mail: tech@probechem.com